
Intermediate Staff Faculty Starterkit

Information for the department of social science

Contents

- Mailing Lists
- Meetings and Events
- Representatives
- Elections
- Contact Details

Mailing Lists

It is imperative that you sign up for the mailing list in your first week at university. This way, your department can keep you updated on everything important going on and everything concerning the intermediate staff.

Please sign up for all mailing lists that may concern you:

- All social science intermediate faculty staff: mittelbau.sowi@unibe.ch
- Intermediate faculty staff at the institute of political science: mittelbau.ipw@unibe.ch
- Intermediate faculty staff at the institute of communication and media studies: mittelbau.ikmb@unibe.ch
- Intermediate faculty staff at the institute of sociology: mittelbau.soz@unibe.ch

Meetings and Events

The intermediate staff faculty representatives board meets on the first Wednesday each month. Events for intermediate staff faculty members will be communicated through the mailing lists (see above).

Representatives

The representatives of the intermediate staff faculty member from the department of social science take part at faculty meetings and department meetings. A list of the current representatives can be found [here](#).

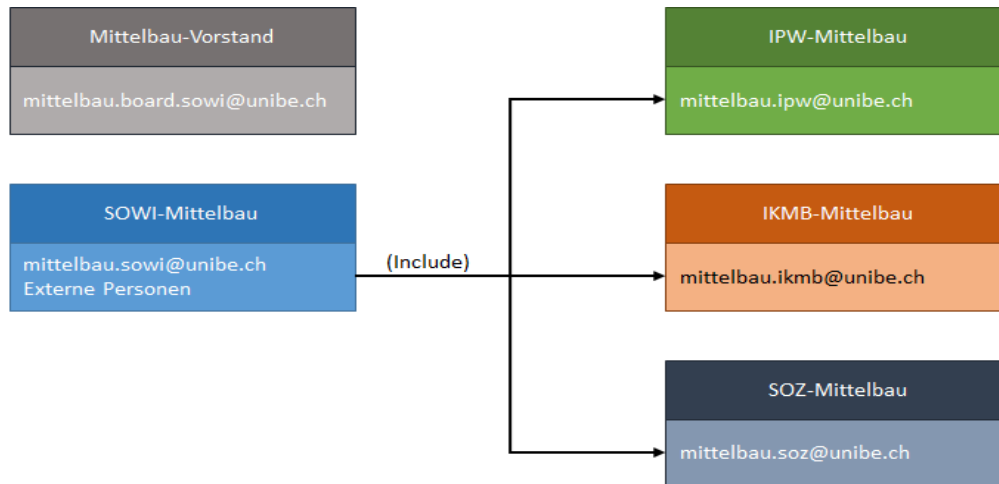
They represent the members of the intermediate staff in their academic and professional interests vis-à-vis the institutes, the departments, the faculty and the university. The representatives aim to ensure that the intermediate staff are granted their rightful place at the University of Bern with appropriate co-determination and participation in research, teaching, service and administration.

Elections

Elections for intermediate staff representatives are held annually in September, if possible in person. Invitations for this will be sent out via the mailing lists.

Contact details

The SOWI faculties intermediate staff is organized as follows:



Please do not hesitate to contact your representatives with specific concerns and questions:

Division	Responsibilities	Name / Contact
<i>Department Representative (SOWI)</i>	Representative in departmental meetings	giada.gianola@unibe.ch
<i>Deputy Department Representative (SOWI)</i>	Representative in departmental meetings	nathalie.hofstetter@unibe.ch
<i>Faculty Representative (SOWI)</i>	Representative in faculty meetings	chiara.valli@unibe.ch
<i>Deputy Faculty Representative (SOWI)</i>	Representative in faculty meetings	siglinde.peetz@unibe.ch
<i>Institute Representative (IPW)</i>	Representative in institute meetings	nathalie.hofstetter@unibe.ch
<i>Deputy Institute Representative (IPW)</i>	Representative in institute meetings	giada.gianola@unibe.ch

Please send corrections and/or additions to mittelbau.board.sowi@unibe.ch.